



137 GE Patterson #201

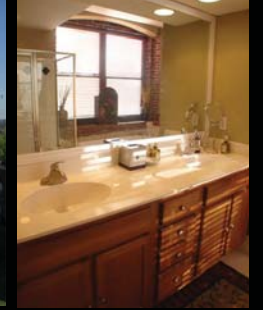
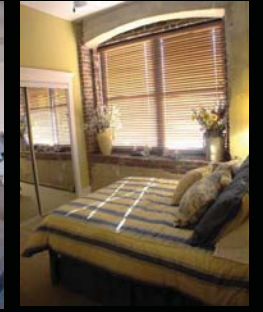
Saint Martin Condos
Downtown Memphis

Approximately 1700 SF

2 Bedroom 2 Baths

2 Parking Places

\$279,000



Amazing Condo Near all the Exciting Entertainment in Downtown. WALK to Spindini, Pearls Oyster Bar, Arcade Restaurant, The Farmers Market, Blue Monkey, Beale Street, FedEx Forum, Cheesecake Corner, Ernestine & Hazels, Rendezvous, Memphis in May, Enjoy Exercise on the River, Friday Night Trolley Tour Every Month, River Arts Festival and when you want to ride the Trolley it is Only a ¼ block from your front door!!

Chris Garland
901.338.3226



Garland Company
REAL ESTATE

901.527.7779

Tracie Gaia
901.649.6232

www.garlandcompany.com

137 GE Patterson, unit 201

South Main Art District
Downtown Memphis

Flooring

Entry, Kitchen, Hall & Living & Dining Area

Hardwood Floors

Baths

Tile

Bedrooms & Hall

Carpet

Kitchen

Custom Cabinetry w/ Glass upper cabinets
Western Sunset View
Vegetable Sprayer all in one Faucet
Built-in Soap Dispenser

Double sinks
Breakfast Bar
Amazingly Cool Pendant lighting
Built-in Automatic Hot Water Valve
Extra Pantry Storage

Stainless Steel Appliances

Gas Range w/Self Cleaning
Microwave Vent-hood
Dishwasher
Disposal

Bar

Custom built bar in Den area
Enormous Extra Storage area

Cocktail Bar for two
Built-in Serving Station

Living & Dining Room

Oversize West View Windows w/2" Wood Blinds
Exposed Brick Walls
Fabulous Exposed Beams & Columns
True Dining rm & True Living rm

Laundry

Located off Hall
Accommodates Side by Side Machines
Built-ins above machines w/Hanging Rod

Master Bedroom

North City View & West Sunset View
Remote Ceiling Fan
Exposed Brick Walls
Full Walk-in Closet w/Built-in Closet Fixtures

Oversize Windows w/2" Wood Blinds
High Ceilings

Master Bath

6' Jacuzzi Tub w/Oversize Tub Deck
Oversize Mirror w/ Mirror frame
Raised Panel Cabinetry
Built-in Linen Cabinetry Storage
West View Window w/2" Wood Blinds

Glass Shower w/Tile Surround
Convenient Drawer Stack Vanity
Exposed Brick Wall
Private Wet Room

Guest Bedroom

West View Windows w/2" Wood Blinds
Double Closet custom fitted w/ Built-in fixtures

Exposed Brick Wall
Fantastic Sunset View

Guest Bath

Tub/Shower combo w/Tile Surround
Decorative Furniture Vanity
Extra Linen Storage
Located off Hall next to Guest Bdrm

General Interior Features

Exposed Brick throughout Condo
Amazing West and North City View
2" Wood Blinds Throughout

Exposed Ducts
Oversize Window ledges

Parking / Storage

Two Uncovered Unassigned Gated Parking Spaces
Designated Guest Parking
One Assigned Secure Storage Space located in Basement

Building Amenities

Secure Limited Access to Community
Designated Pet Area
Lovely Courtyard w/ Water Feature, Dynamic Gas Grill, Refrigerator & Dry Bar
Fully Gated Community
Exercise Room created by all Owners Personal Equipment w/in Community
Call Box/Proximity Card Entrance to Community and Building

Location

Within ½ block of the Trolley Line
Within 3 blocks of River
Trolley to Fed Ex Forum
In the Heart of South Main Arts District

Trolley to all Gyms
Walk to Wide Variety of Dining
Walk to Beale Street

HOA Fees

\$250.00 Monthly Fee
Managed by Northern Properties



901.527.7779

Chris Garland

901.338.3226

chris@garlandcompany.com

Tracie Gaia

901.649.6232

soldwithtracie@hotmail.com

Visit our website for more property information

www.garlandcompany.com